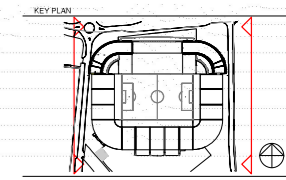
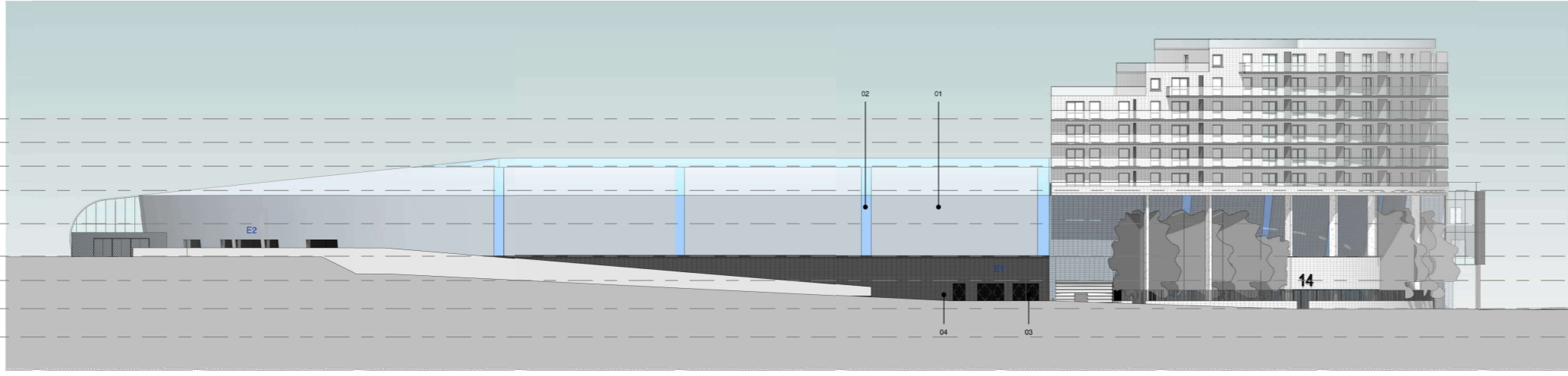


REVISIONS	
REV	DESCRIPTION



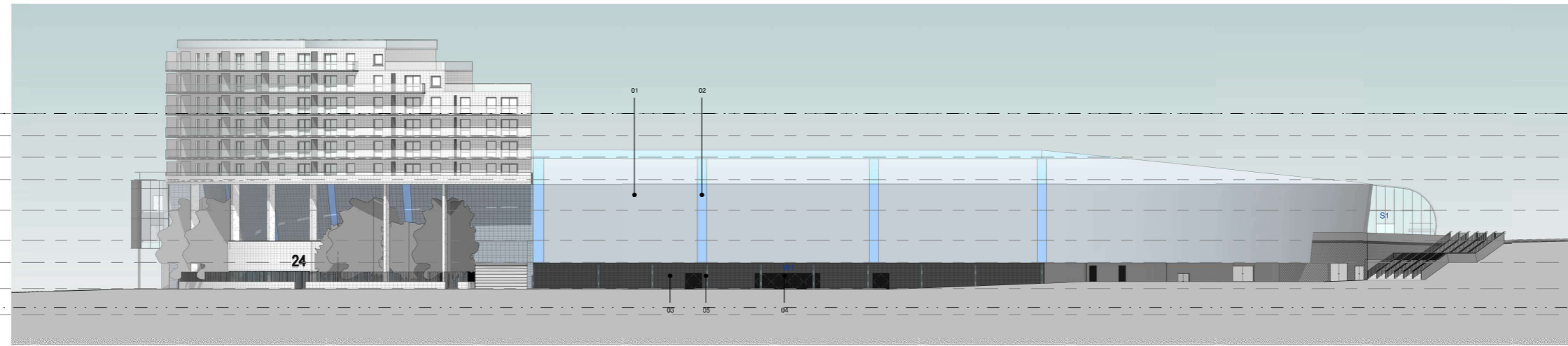
- 01. Grey standing seam aluminium cladding to facade and roof.
- 02. Blue polycarbonate cladding.
- 03. Black steel entrance doors.
- 04. Grey fair-faced blockwork.

L7 - ROOF LEVEL	36450	▼
L6 - HOTEL LEVEL	33625	▼
L5 - HOTEL/ BOX LEVEL	30600	▼
L4 - MEETING/ BOX LEVEL	27600	▼
L3 - HOSPITALITY LEVEL	23500	▼
L2 MAIN CONCOURSE	19500	▼
L1M - MEZZANINE CONCOURSE LEVEL	16500	▼
L1 - LOWER CONCOURSE/BOX LEVEL	13000	▼
L0 - PARKING LEVEL	9500	▼



1. EAST ELEVATION - PHASE 02  
1 : 250

L7 - ROOF LEVEL	36450	▼
L6 - HOTEL LEVEL	33625	▼
L5 - HOTEL/ BOX LEVEL	30600	▼
L4 - MEETING/ BOX LEVEL	27600	▼
L3 - HOSPITALITY LEVEL	23500	▼
L2 MAIN CONCOURSE	19500	▼
L1M - MEZZANINE CONCOURSE LEVEL	16500	▼
L1 - LOWER CONCOURSE/BOX LEVEL	13000	▼
L0 - PARKING LEVEL	9500	▼



2. WEST ELEVATION - PHASE 02  
1 : 250

▼ SITE PLAN  
36455

▼ STADIUM PITCH LEVEL  
10500



CLIENT  
SOUTHEND UNITED FC

ARCHITECT  
**POPULOUS®**  
14 BLADES COURT | DEODAR ROAD | LONDON | SW15 2NU | UNITED KINGDOM  
TELEPHONE: +44 (0)20 8874 7666 | FACSIMILE: +44 (0)20 8874 7470  
E-MAIL: info@populous.com | www.populous.com

PROJECT NAME  
SOUTHEND UNITED FC  
DRAWING TITLE  
EAST & WEST ELEVATIONS  
PHASE 02

STATUS	FOR PLANNING	PROJECT NO.	3093
DATE	24.03.2017	SCALE	As indicated A0
DRAWN	OC	CHECKED	CC
APPROVED	MT	DATE	
PROJECT	SUS-POP-ZX-ZZ-EE-A-	DRAWING	0302 00